



Week 1 & Week 2 Forecast for the Philippines using GEFS Model



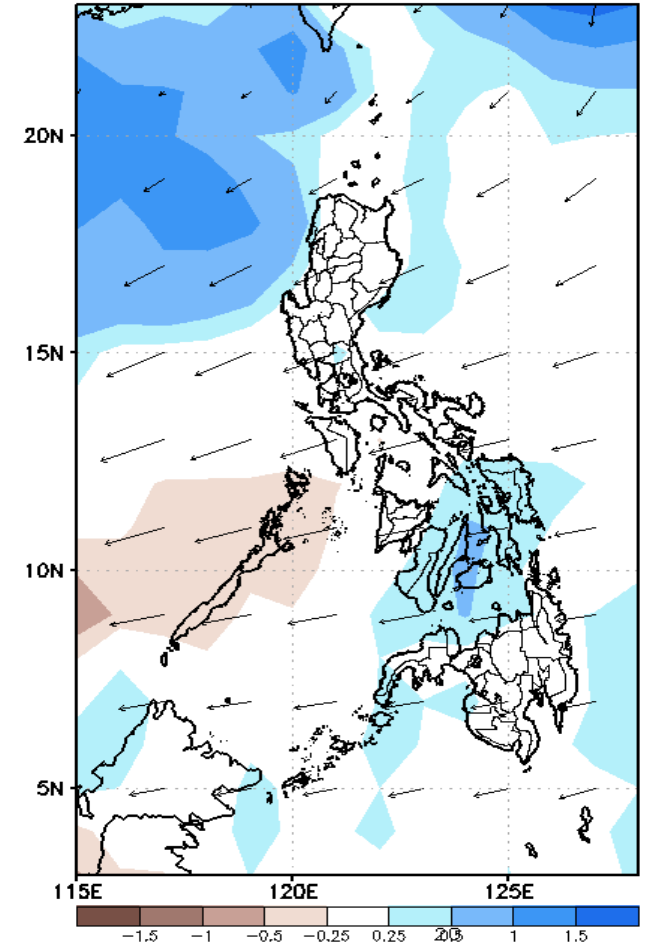
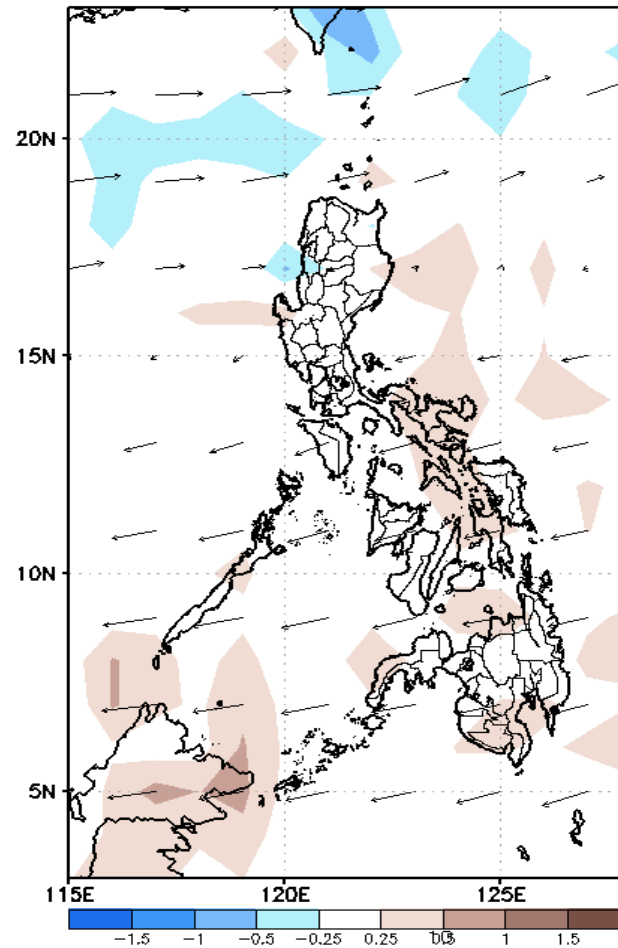
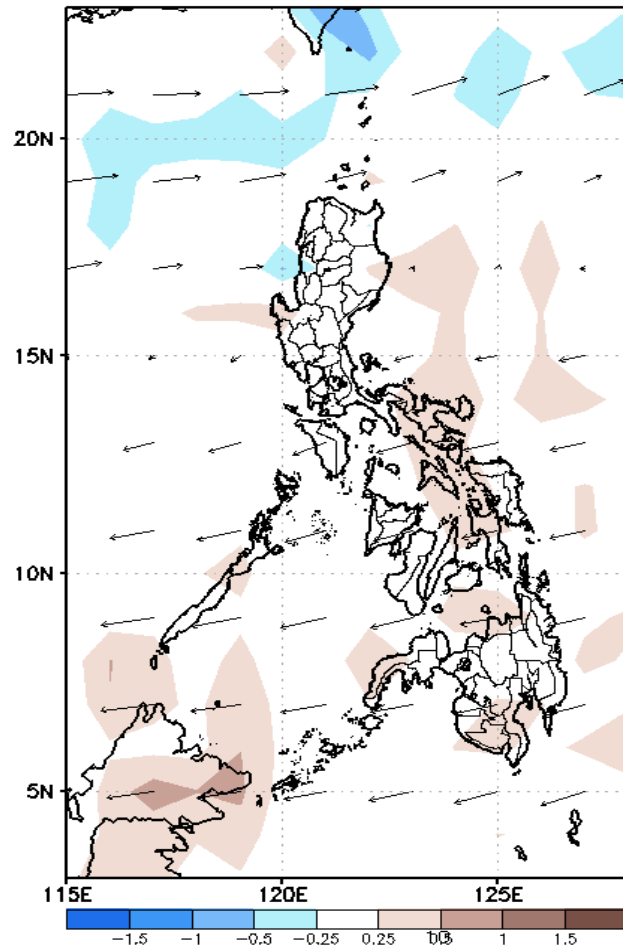
GEFS Week-1 Forecasts: Divergence & Wind Anomaly

Week 1: Aug 24-30, 2020

GEFS Week-1 850-hPa Divergence and Wind Anom
Valid: 20200824 - 20200830

GEFS Week-1 700-hPa Divergence and Wind Anom
Valid: 20200824 - 20200830

GEFS Week-1 200-hPa Divergence and Wind Anom
Valid: 20200824 - 20200830

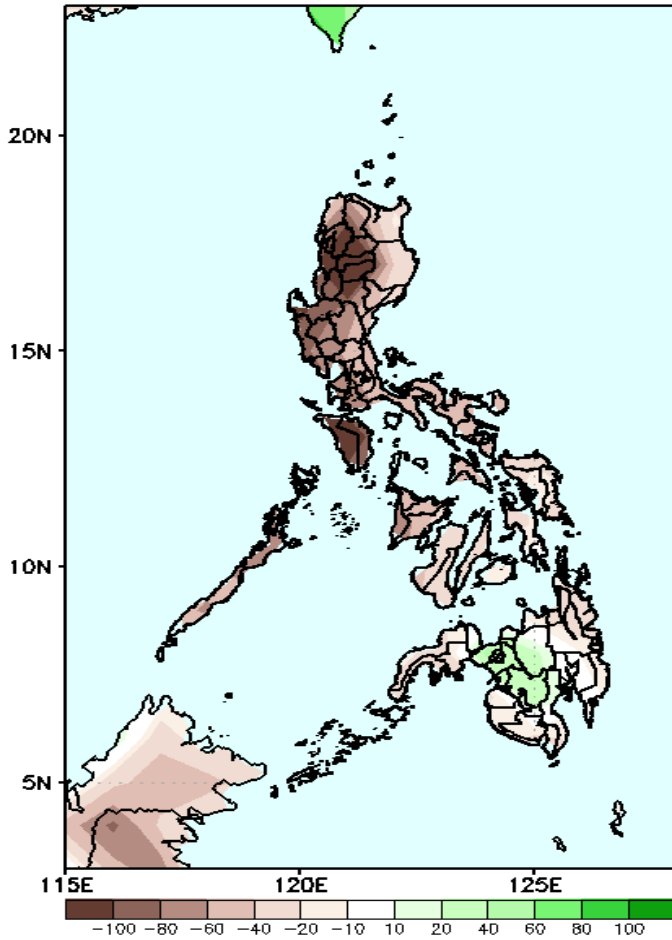


Upper level (200 hPa) Divergence suggest likelihood of precipitation in most parts of Visayas. Southwest Monsoon affecting extreme northern Luzon, Easterlies affecting most parts of the country during the forecast period.

Precipitation Anomaly and Exceedance Probability > 25/50 mm

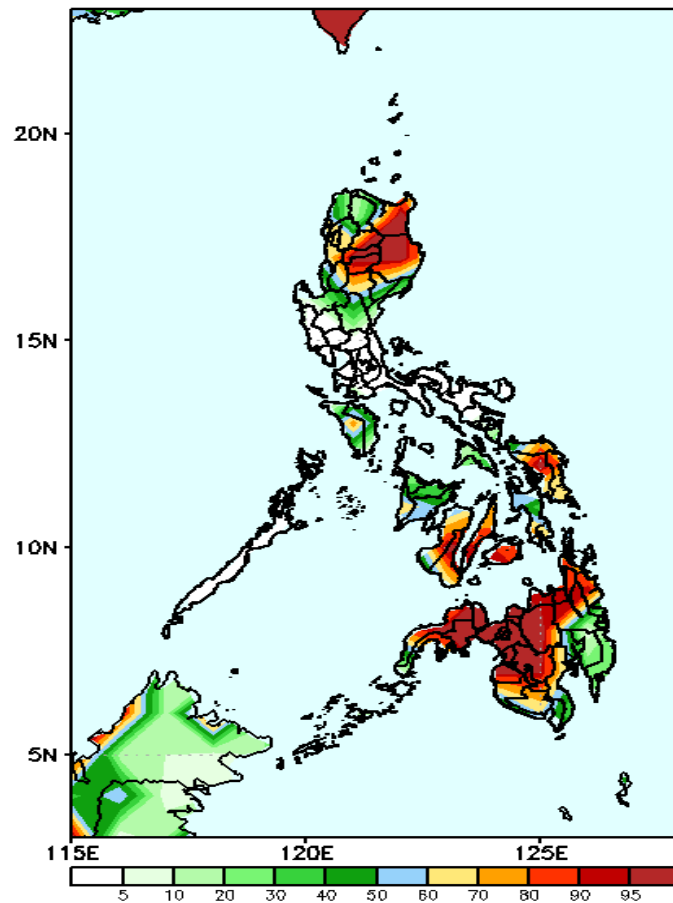
Week 1: Aug 24-30, 2020

GEFS Week-1 Precip Anomaly
Valid: 20200824 - 20200830



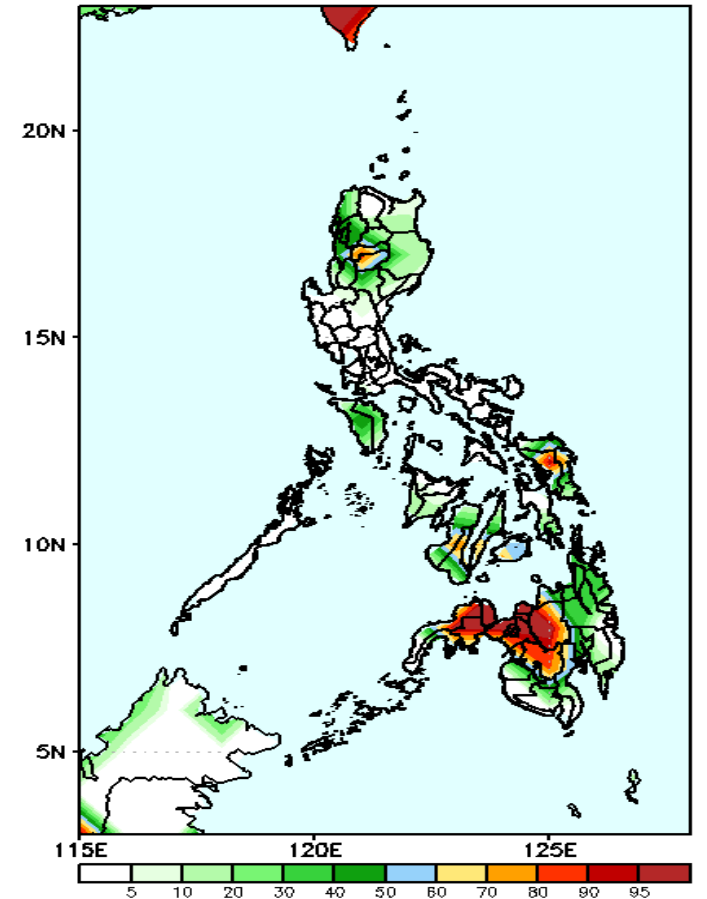
Rainfall deficit of 40-100 mm in most parts of Luzon is expected while 20-80 mm in Visayas during the forecast period.

GEFS Week-1 Exceedance Prob. > 25mm
Valid: 20200824 - 20200830



High probability of rainfall to exceed 25mm in most parts of Cordillera Region, Cagayan Valley, Samar provinces, CARAGA Region and most parts of Mindanao except in Davao provinces and the rest of the country where less likely during the forecast period.

GEFS Week-1 Exceedance Prob. > 50mm
Valid: 20200824 - 20200830

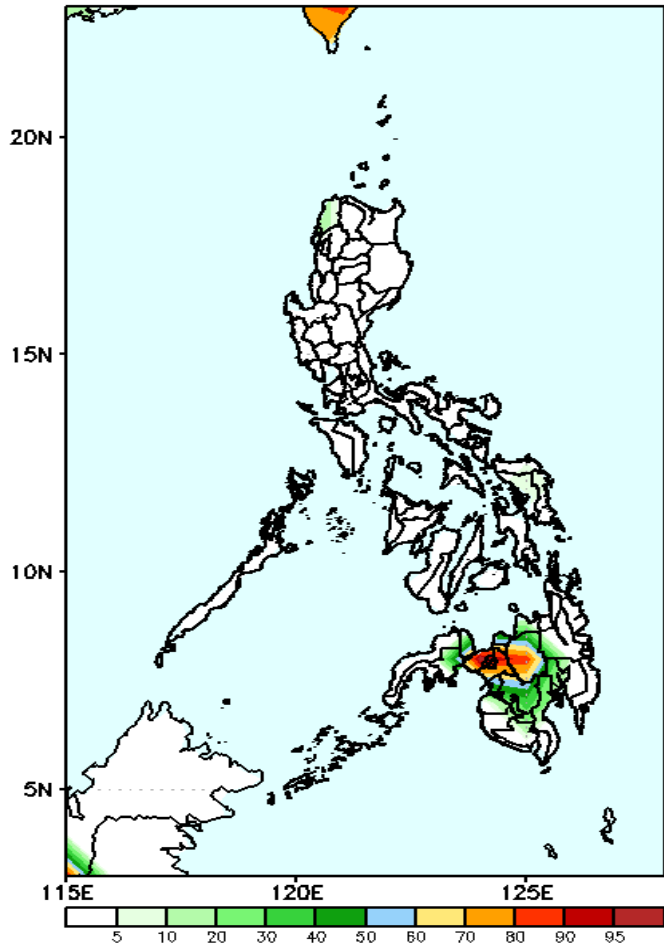


High probability of rainfall to exceed 50mm in northern half of Luzon, Mindoro, western Samar and northwestern parts of Mindanao is expected while less likely for the rest of the country during the forecast period.

Exceedance Probability > 100/150/200 mm

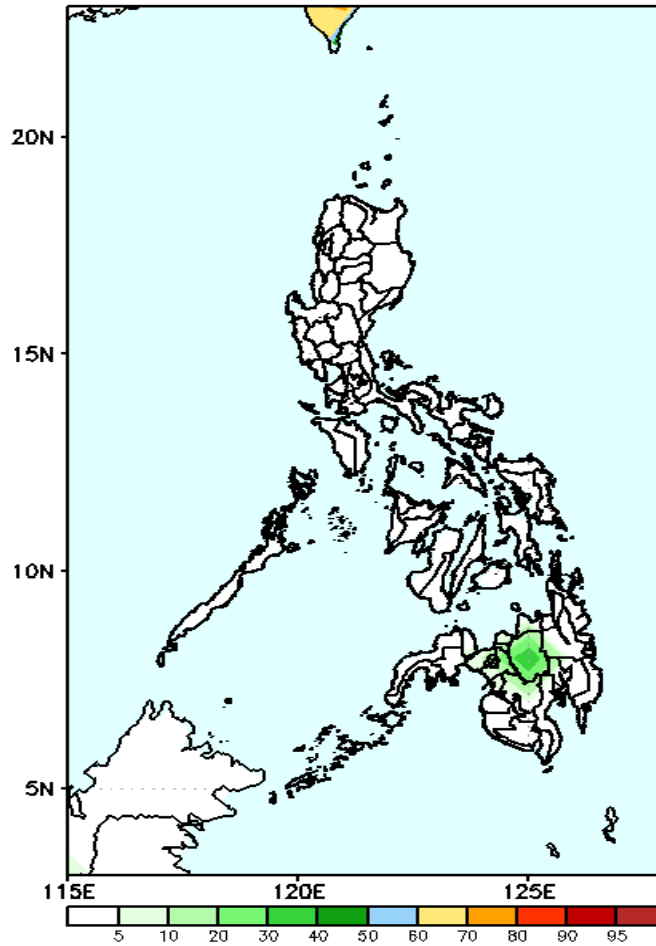
Week 1: Aug 24-30, 2020

GEFS Week-1 Exceedance Prob. > 100mm
Valid: 20200824 - 20200830



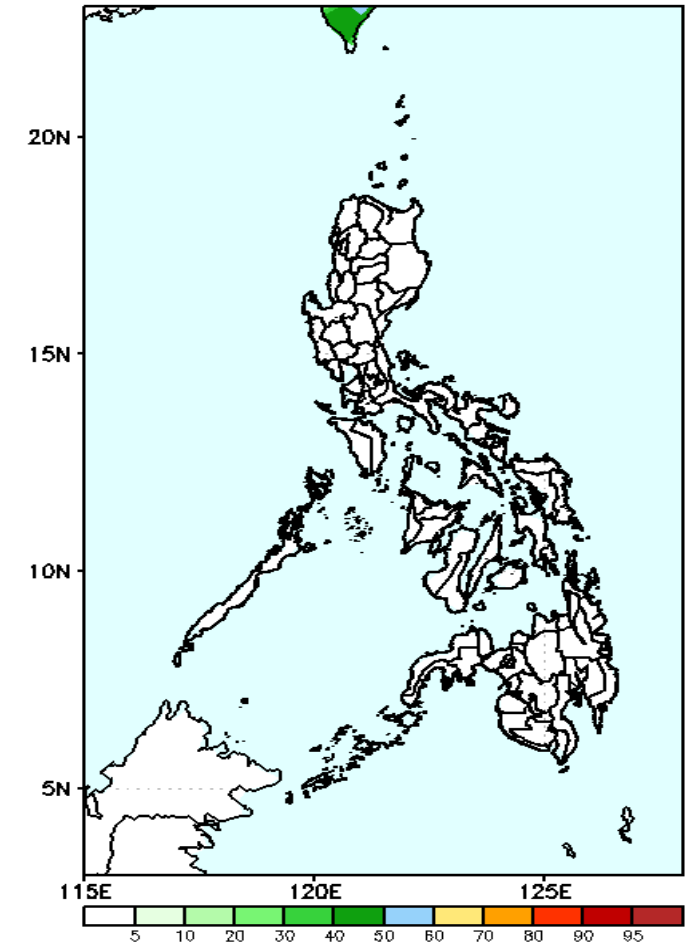
High probability of rainfall to exceed 100mm in Bukidnon and Lanao del Norte & Sur while less likely for the rest of the country during the forecast period.

GEFS Week-1 Exceedance Prob. > 150mm
Valid: 20200824 - 20200830



Less probability of rainfall to exceed 150mm in most parts of the country during the forecast period.

GEFS Week-1 Exceedance Prob. > 200mm
Valid: 20200824 - 20200830



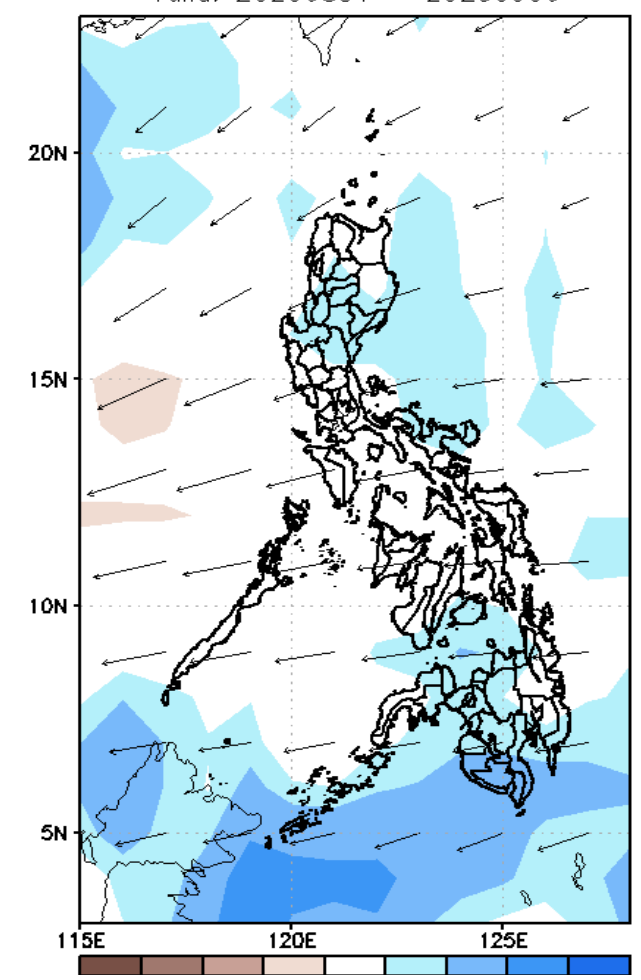
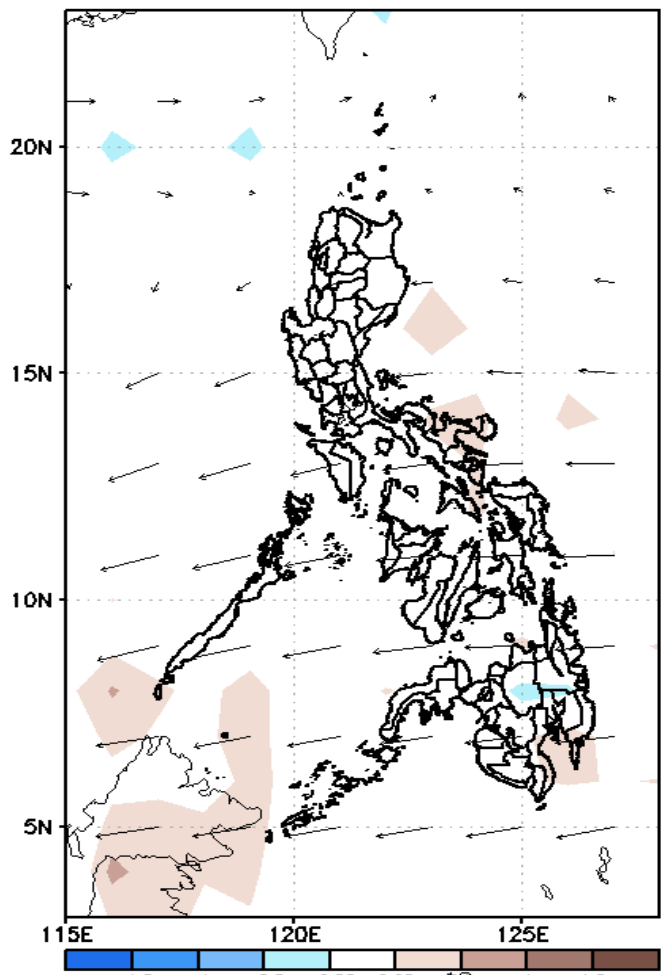
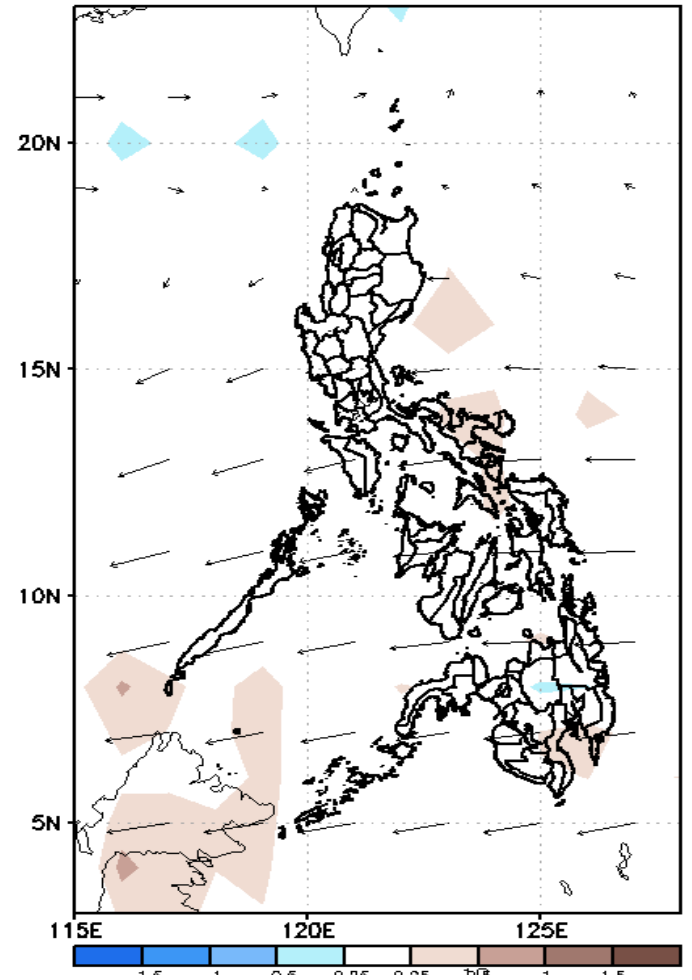
Less probability of rainfall to exceed 200mm in most parts of the country during the forecast period.



GEFS Week-2 Forecasts: Divergence & Wind Anomaly

Week 2: Aug 31-Sep 06, 2020

GEFS Week-2 850-hPa Divergence and Wind Anom; Week-2 700-hPa Divergence and Wind Anom; GEFS week-2 200-hPa Divergence and Wind Anom
Valid: 20200831 - 20200906

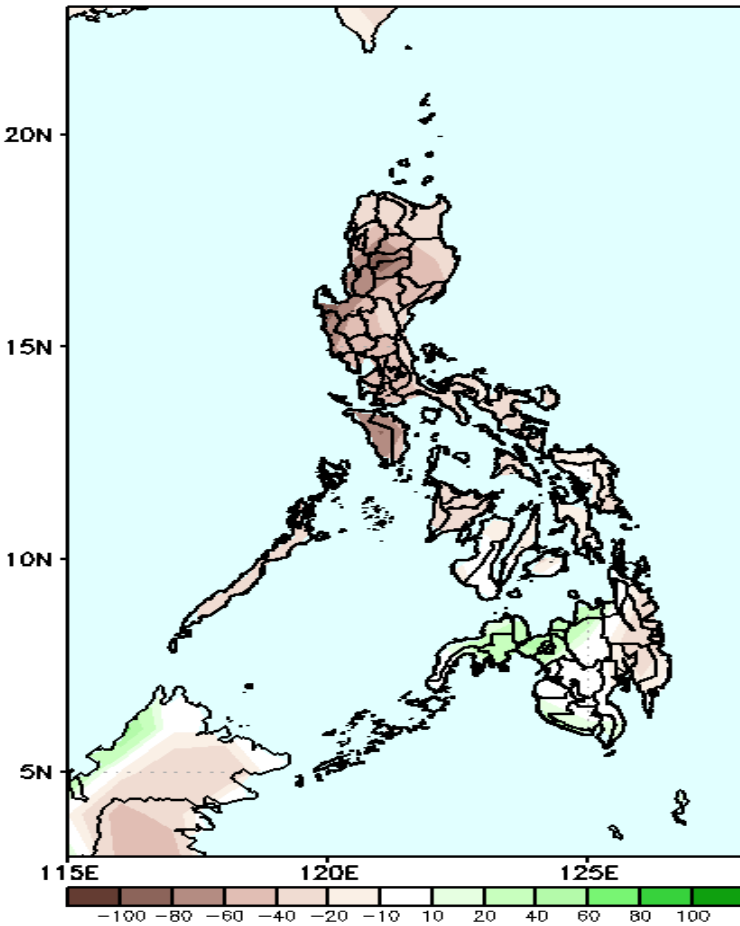


Upper level (200 hPa) Divergence suggest likelihood of precipitation in most parts of central and southern Luzon and most parts of Mindanao. Southwest Monsoon affecting extreme northern Luzon, Easterlies affecting most parts of the country during the forecast period.

Precipitation Anomaly and Exceedance Probability > 25/50 mm

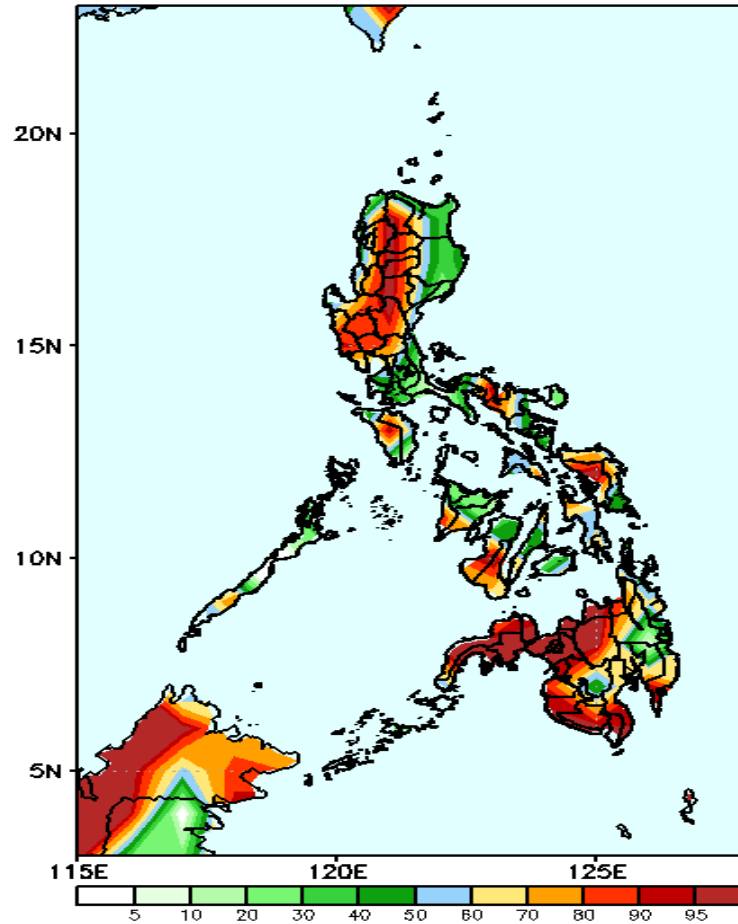
Week 2: Aug 31-Sep 06, 2020

GEFS Week-2 Precip Anomaly
Valid: 20200831 - 20200906



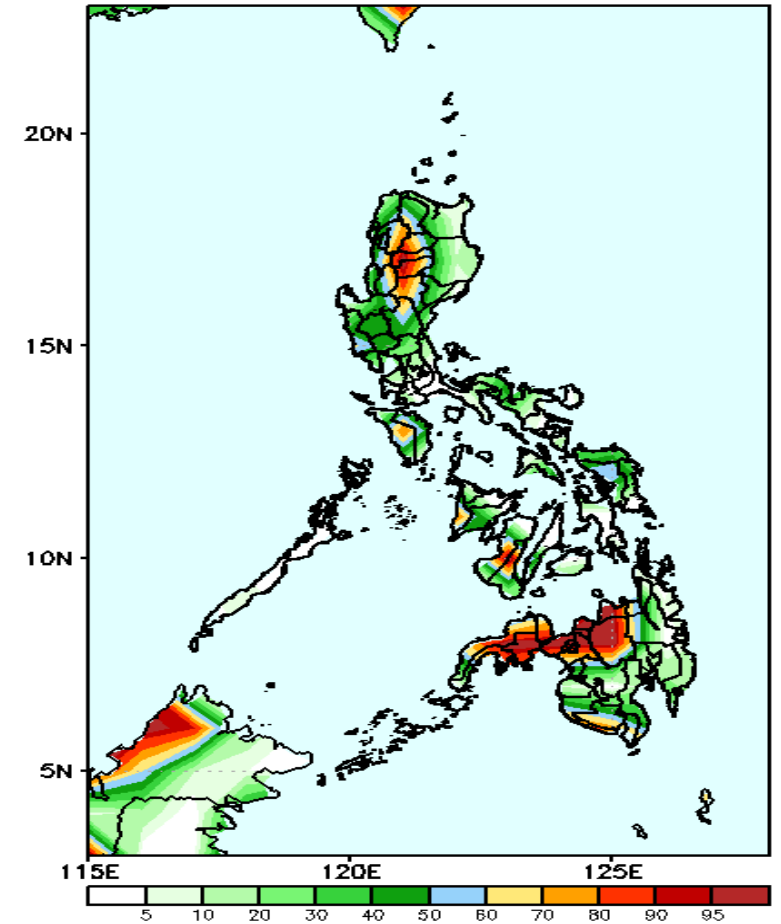
Rainfall deficit of up to 80mm in most parts of Luzon is expected while northern Mindanao will likely to have an increase of 20-40mm rainfall during the forecast period.

GEFS Week-2 Exceedance Prob. > 25mm
Valid: 20200831 - 20200906



High probability of rainfall to exceed 25mm in most parts of the country is expected except in Cagayan, Isabela and central Visayas where there is low probability during the forecast period.

GEFS Week-2 Exceedance Prob. > 50mm
Valid: 20200831 - 20200906

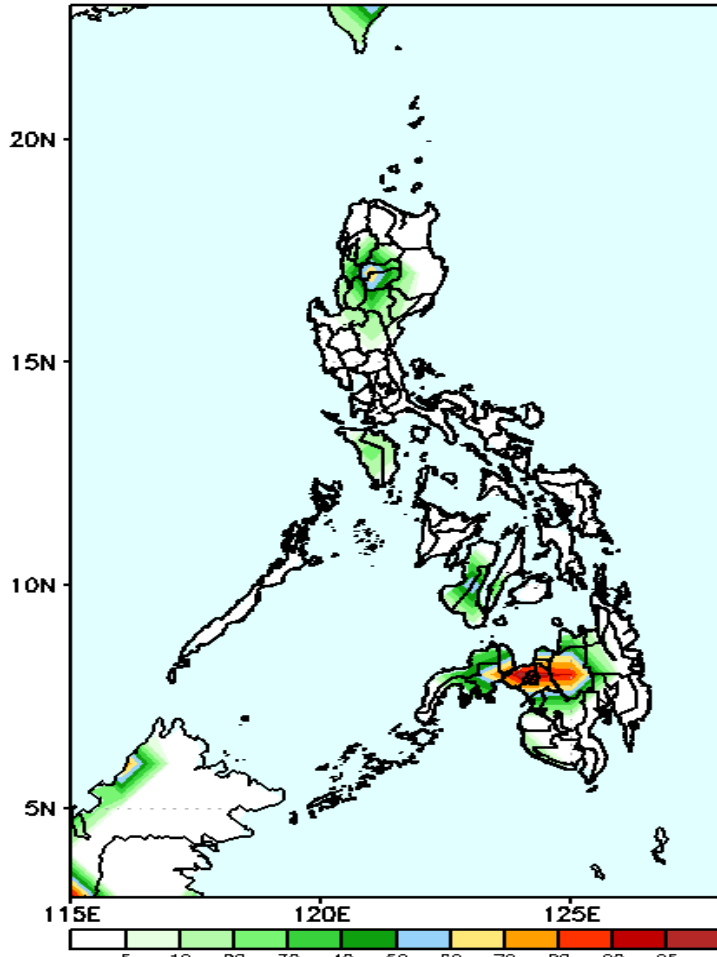


High probability of rainfall to exceed 50mm in Cordillera Region and northwestern parts of Mindanao is expected while less likely for the rest of the country during the forecast period.

Exceedance Probability > 100/150/200 mm

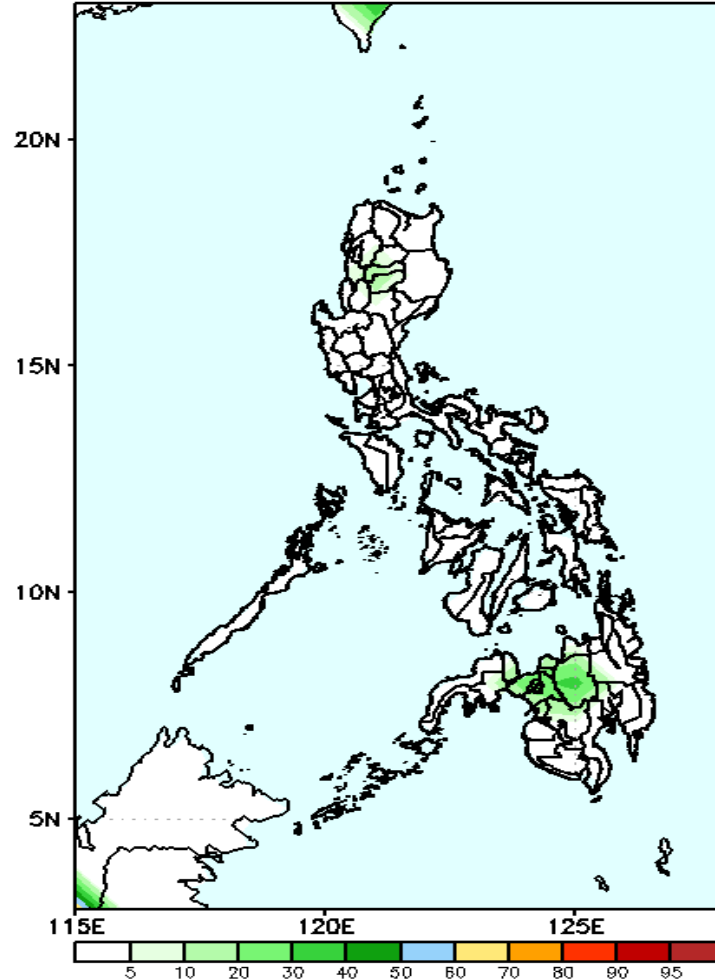
Week 2: Aug 31-Sep 06, 2020

GEFS Week-2 Exceedance Prob. > 100mm
Valid: 20200831 - 20200906



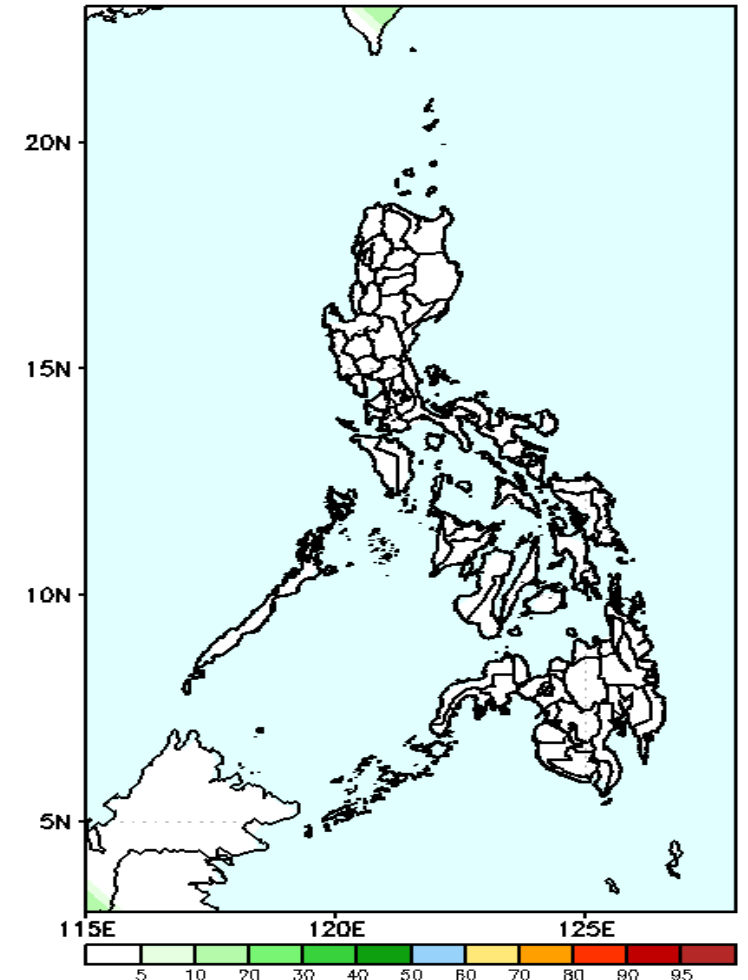
High probability of rainfall to exceed 100mm in Bukidnon and Lanao provinces is expected while less likely for the rest of the country during the forecast period.

GEFS Week-2 Exceedance Prob. > 150mm
Valid: 20200831 - 20200906



Less probability of rainfall to exceed 150mm in most parts of the country during the forecast period.

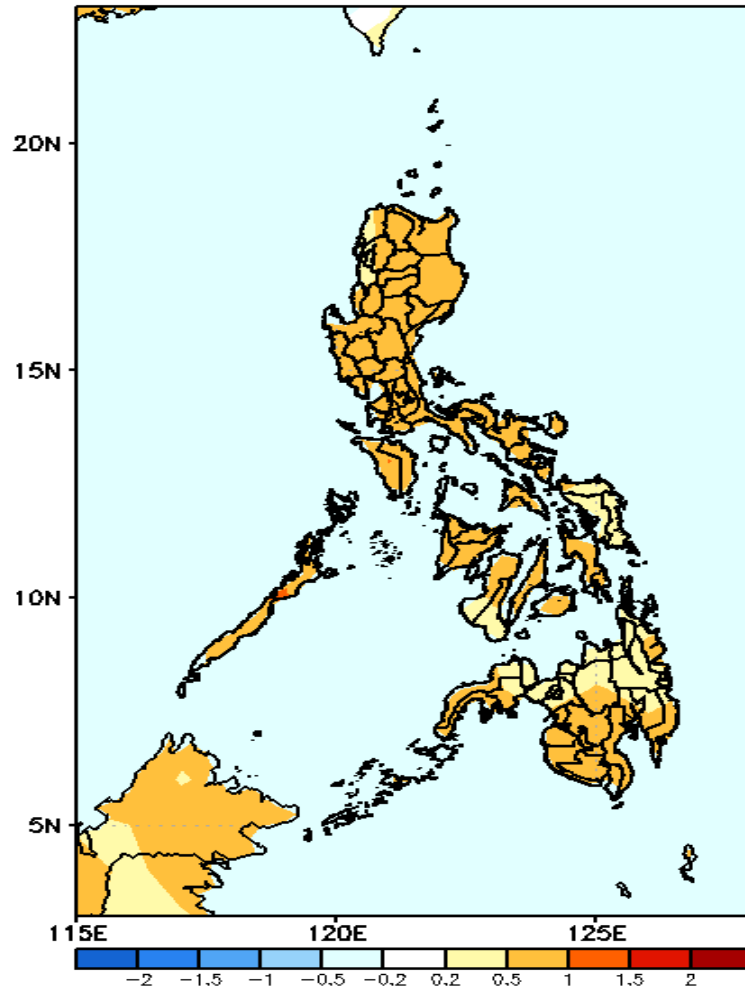
GEFS Week-2 Exceedance Prob. > 200mm
Valid: 20200831 - 20200906



Less probability of rainfall to exceed 200mm in most parts of the country during the forecast period.

GEFS Week-1 & 2 Forecasts: T2m Anomaly

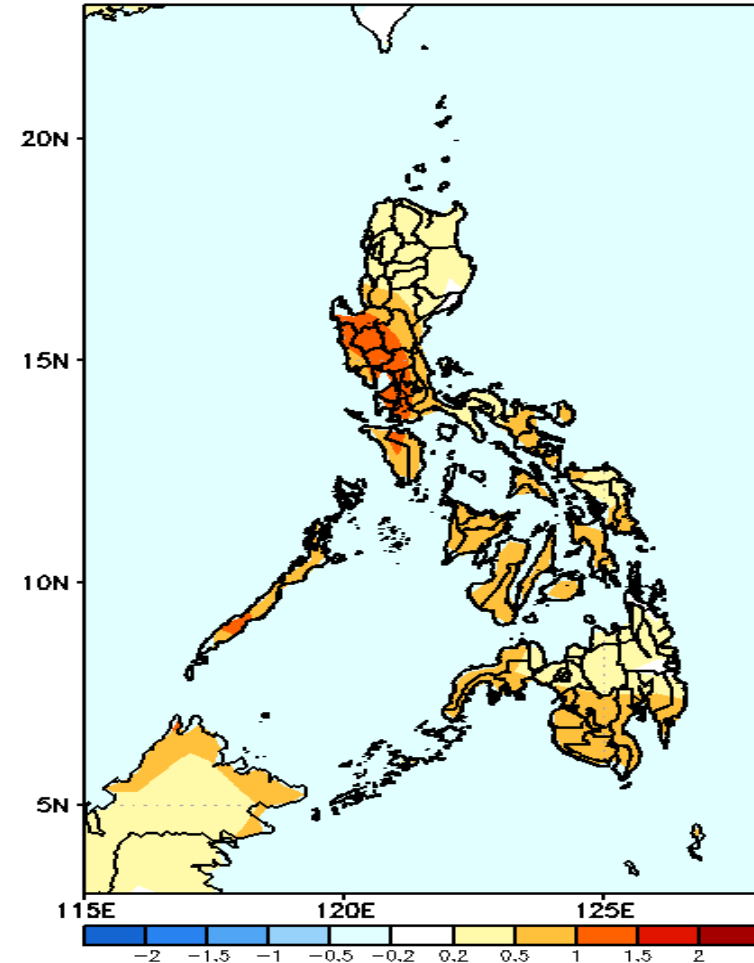
GEFS Week-1 T2m Anomaly
Valid: 20200824 - 20200830



2m Temperature Week 1: Aug 24-30, 2020

Slightly warmer than average surface air temperature will likely experience in most parts of the country during the forecast period.

GEFS Week-2 T2m Anomaly
Valid: 20200831 - 20200906



2m Temperature Week 2: Aug 31-Sep 06, 2020

Warmer than average surface air temperature will likely experience in most parts of southern half of Luzon while average to slightly warmer surface air temperature is expected for the rest of the country during the forecast period.